



Quality Of Life In Alzheimer's Dementia And It's Care-Giving In Southeast Asia; A Systematic Literature Review

Supervisors:
Prof. Dr. Saira Afzal, Miss Faiza Aziz

Submitted By:
Batch - 07

INTRODUCTION

Alzheimer's Disease is a brain disorder characterized by Dementia, having several adverse consequences for Quality of Life (QoL).

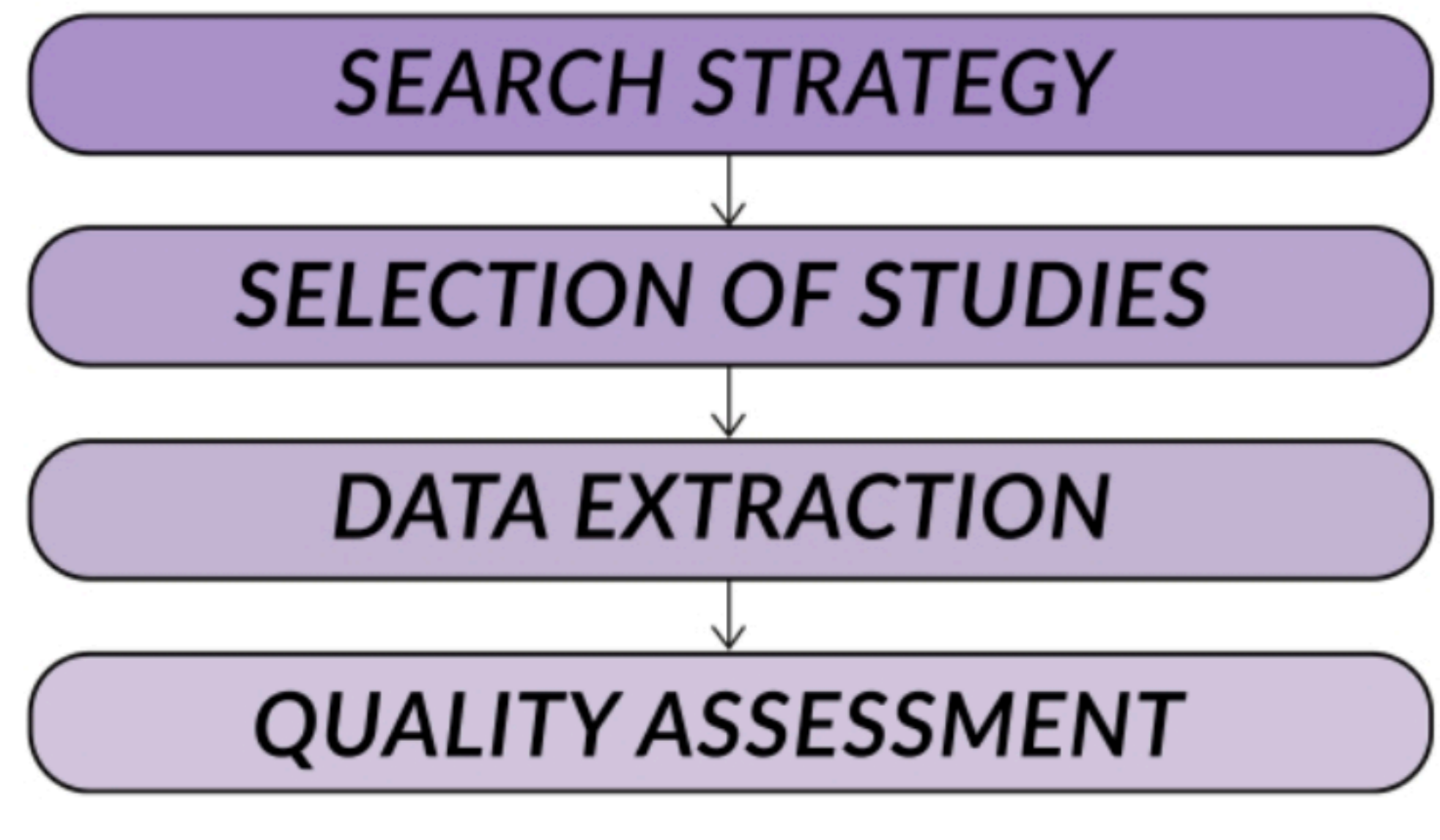


We conducted systematic review of the literature to study overall Quality of Life of patients and their care-givers and caregiving of this dementia in Southeast Asia.

OBJECTIVES

- To describe different questionnaire and scales that have been used to access the QOL in Alzheimer patients and their care givers and to show their validity based on literature
- To assess the QOL in Alzheimer patients as well as their care-givers in Southeast Asia
- To find out different factors either positively or negatively associated with QOL in Alzheimer patients
- To assess care giving of Alzheimer's dementia in this region

METHODOLOGY



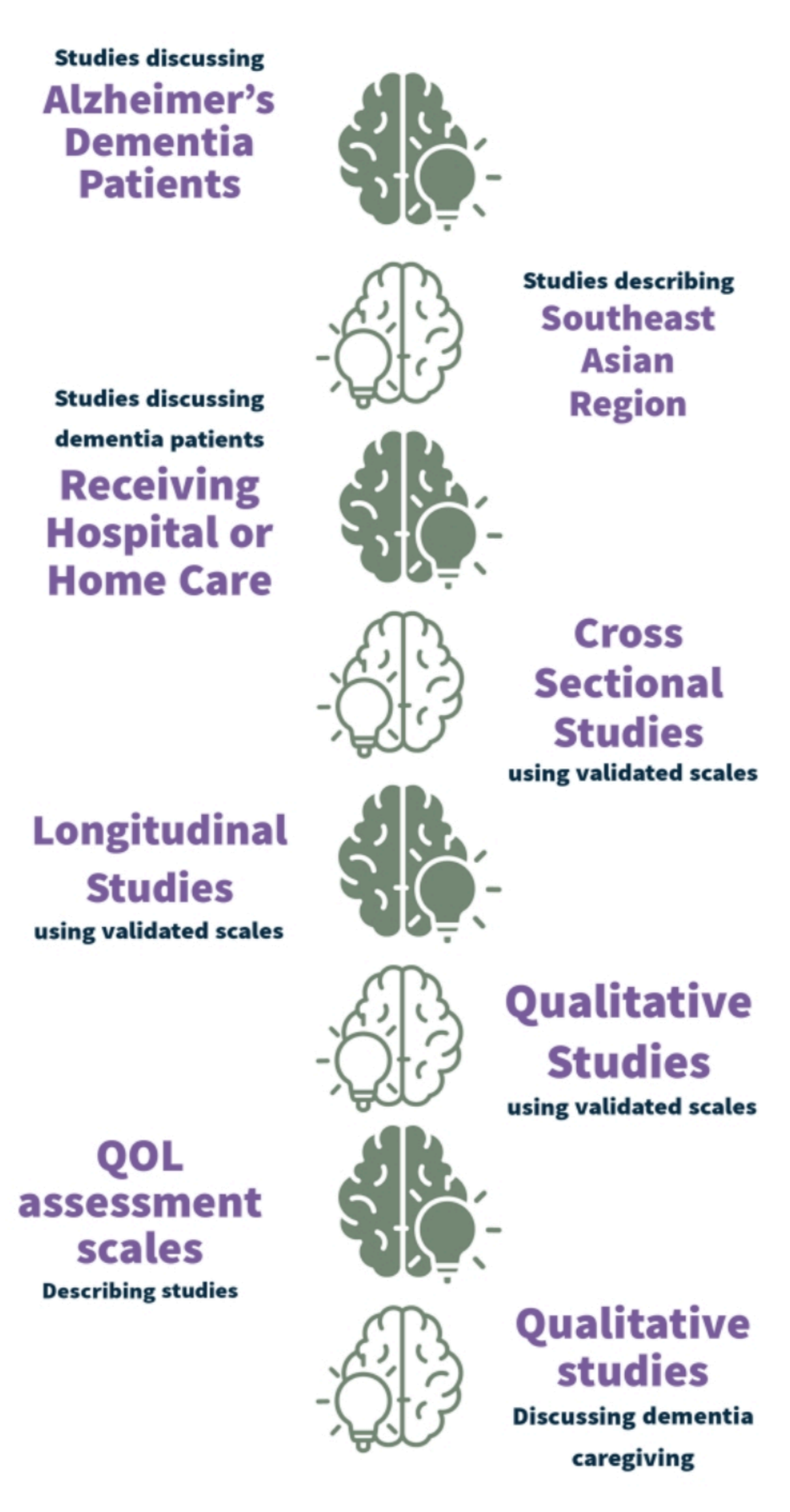
- A systematic literature review was conducted according to PRISMA guidelines on electronic databases PubMed, Google Scholar and PsycINFO. Our search terms were: "quality of life", "QOL", "Alzheimer's disease", "Alzheimer's dementia", "caregiving" and "South-east Asia".
- Two authors screened studies according to inclusion criteria by reading title, abstract and full text. Discrepancies were resolved via negotiation with a 3rd reviewer.
- Data was extracted from studies in form of excel spreadsheet. Studies were evaluated for their quality by using Joanna Briggs Institute (JBI) critical Appraisal Tool.

CONCLUSIONS

QOL-AD and WHO-QOL BREF are mostly frequently used tools for quality of life assessment in Alzheimer's patients and their caregivers respectively. Caregiver's QOL positively influences that of patients. Due to strain of caregiving, QOL of caregivers of Alzheimer's patients is low. There exists gap in research in this region, related to effect of Alzheimer's dementia on QOL in different severity stages. More aspects of physical, environmental, social and psychological health that can affect quality of life should be explored.

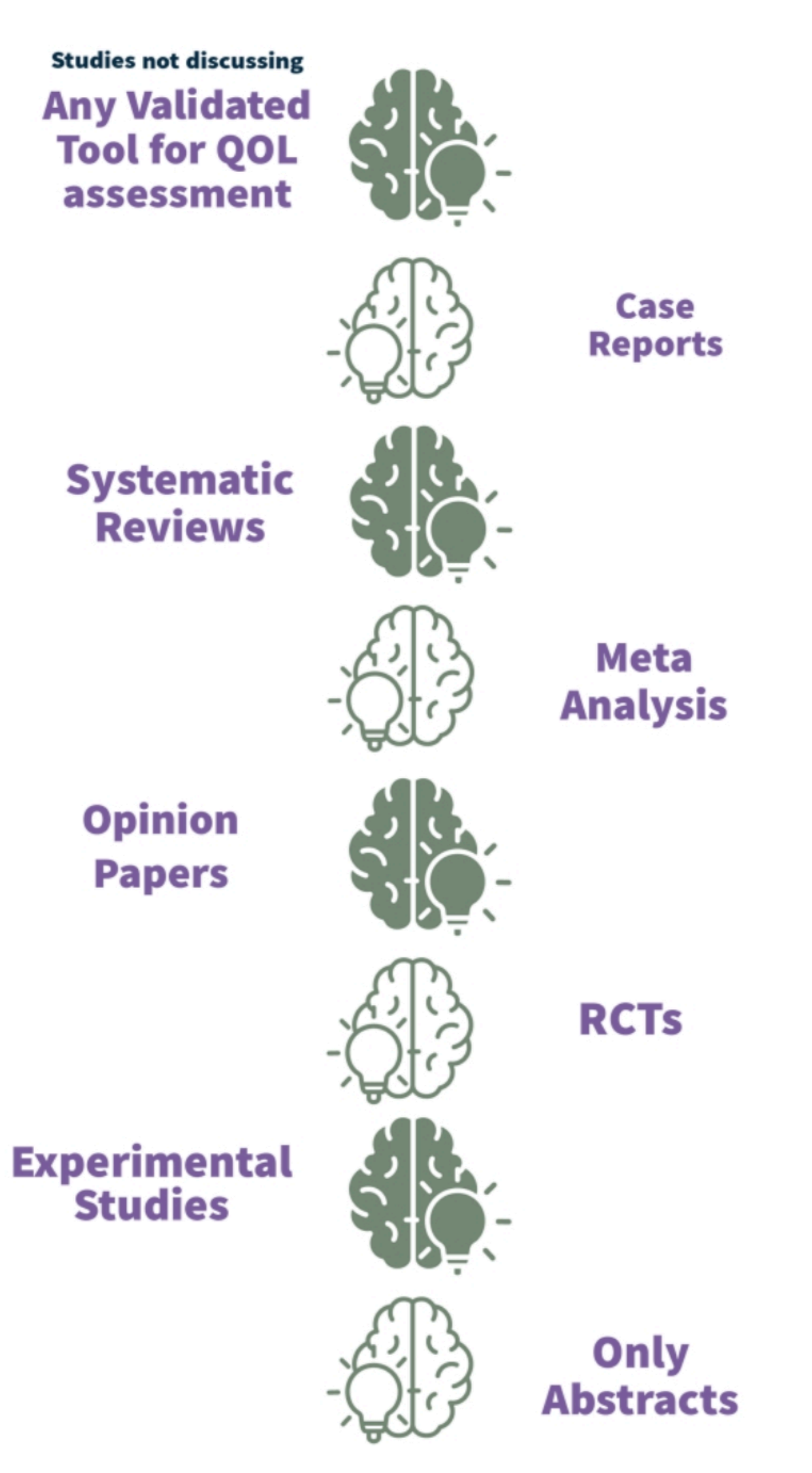
INCLUSION CRITERIA

We Included the followings:

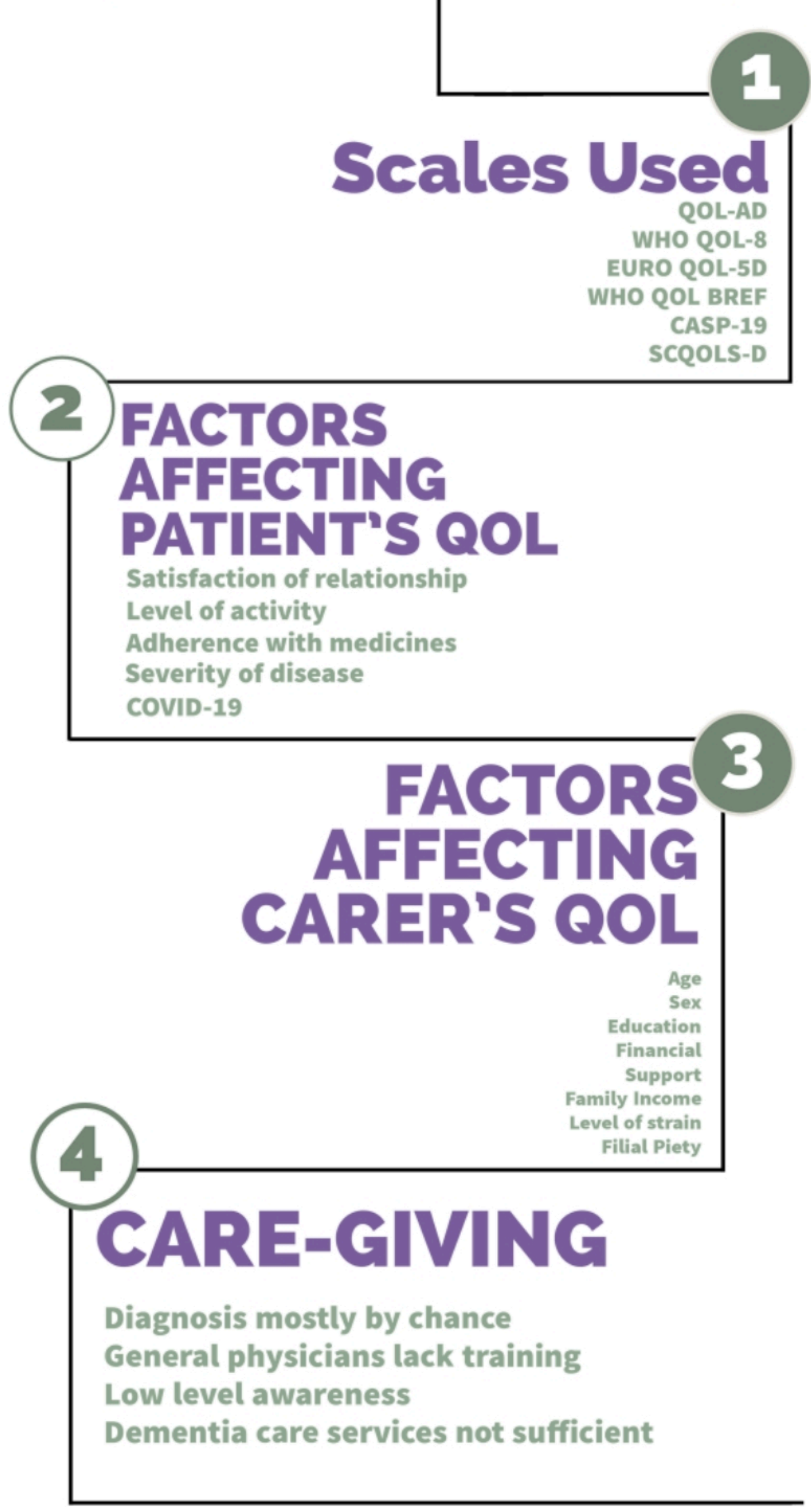


EXCLUSION CRITERIA

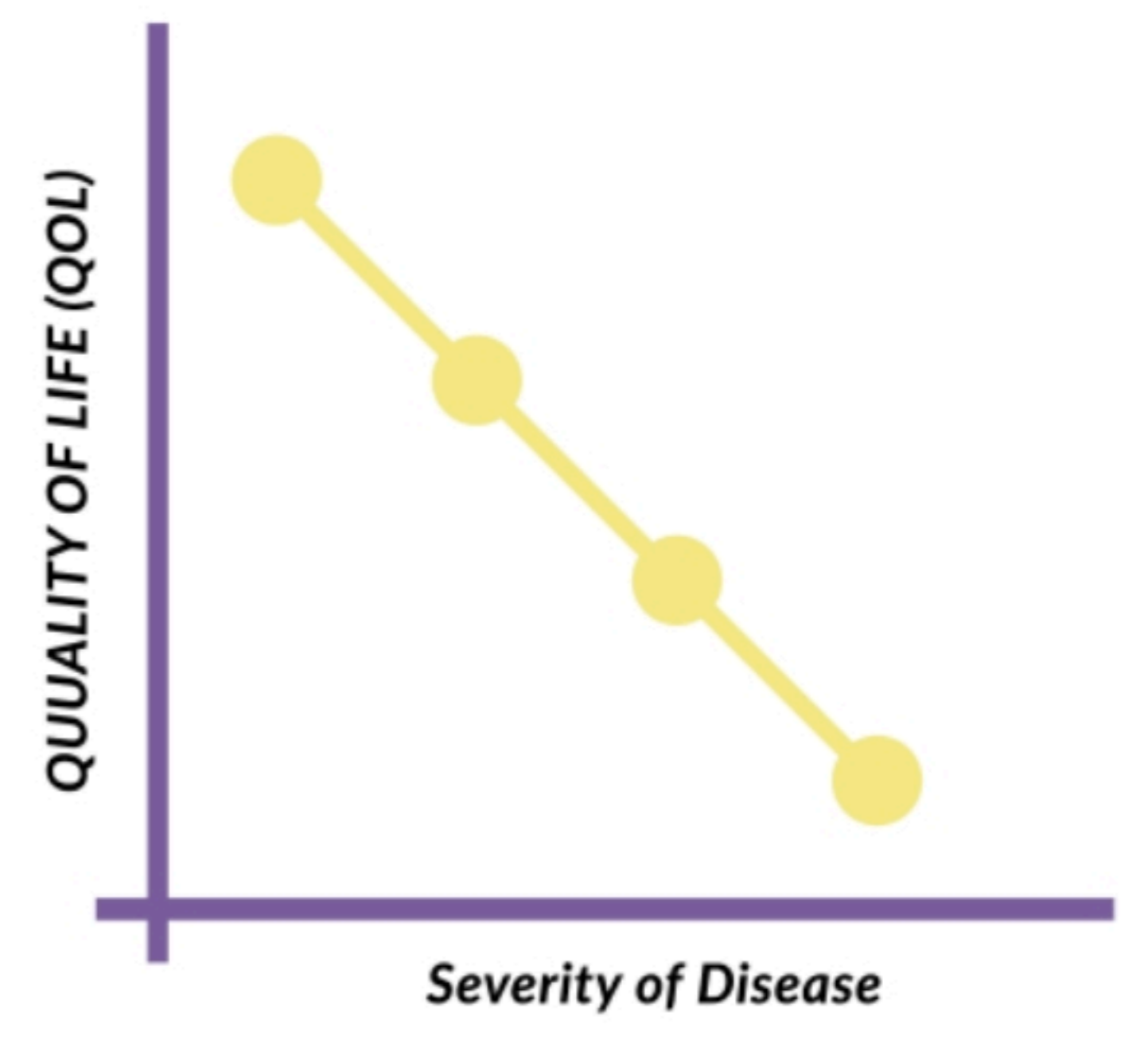
We Excluded the followings:



RESULTS



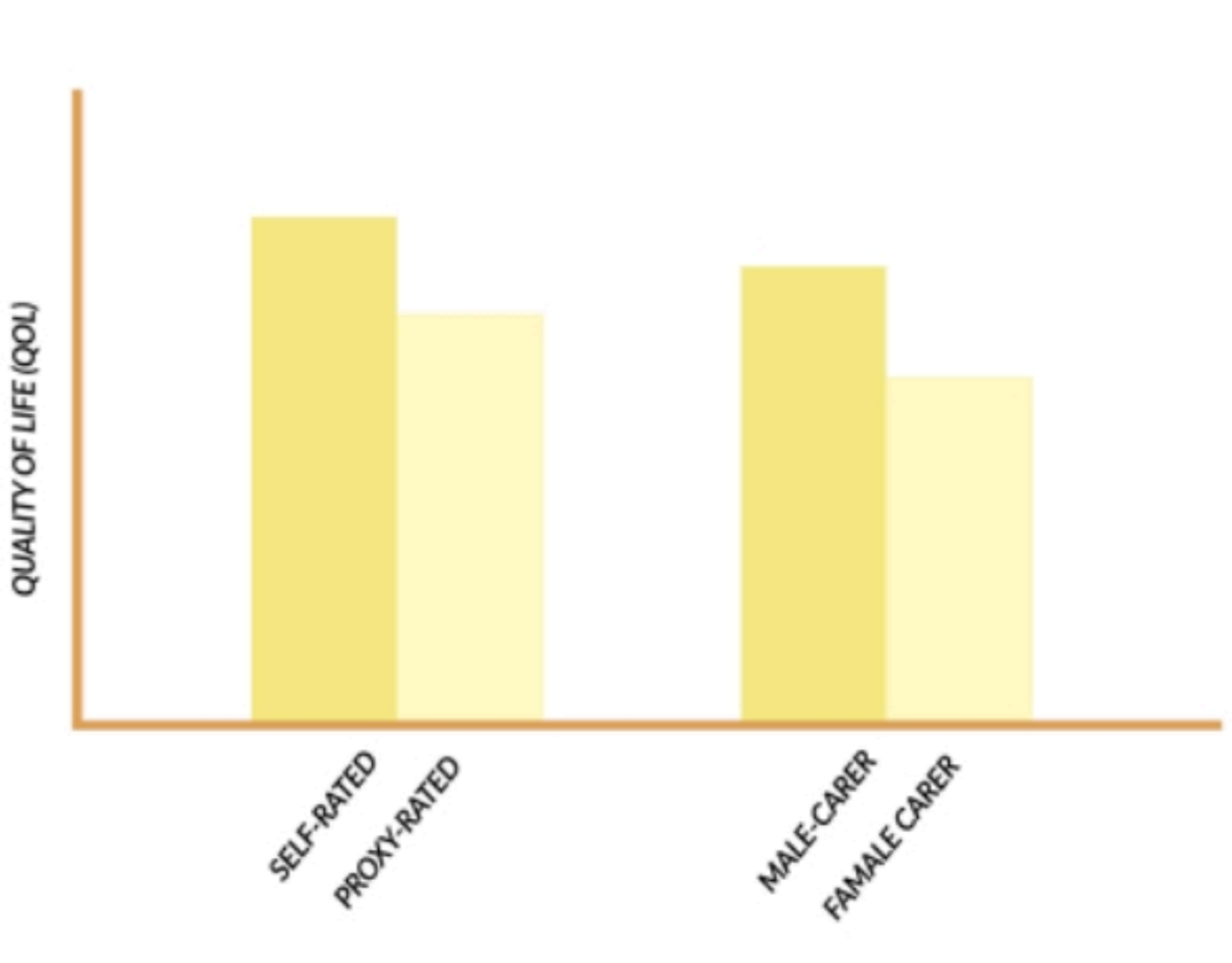
Severity of Disease and QOL:



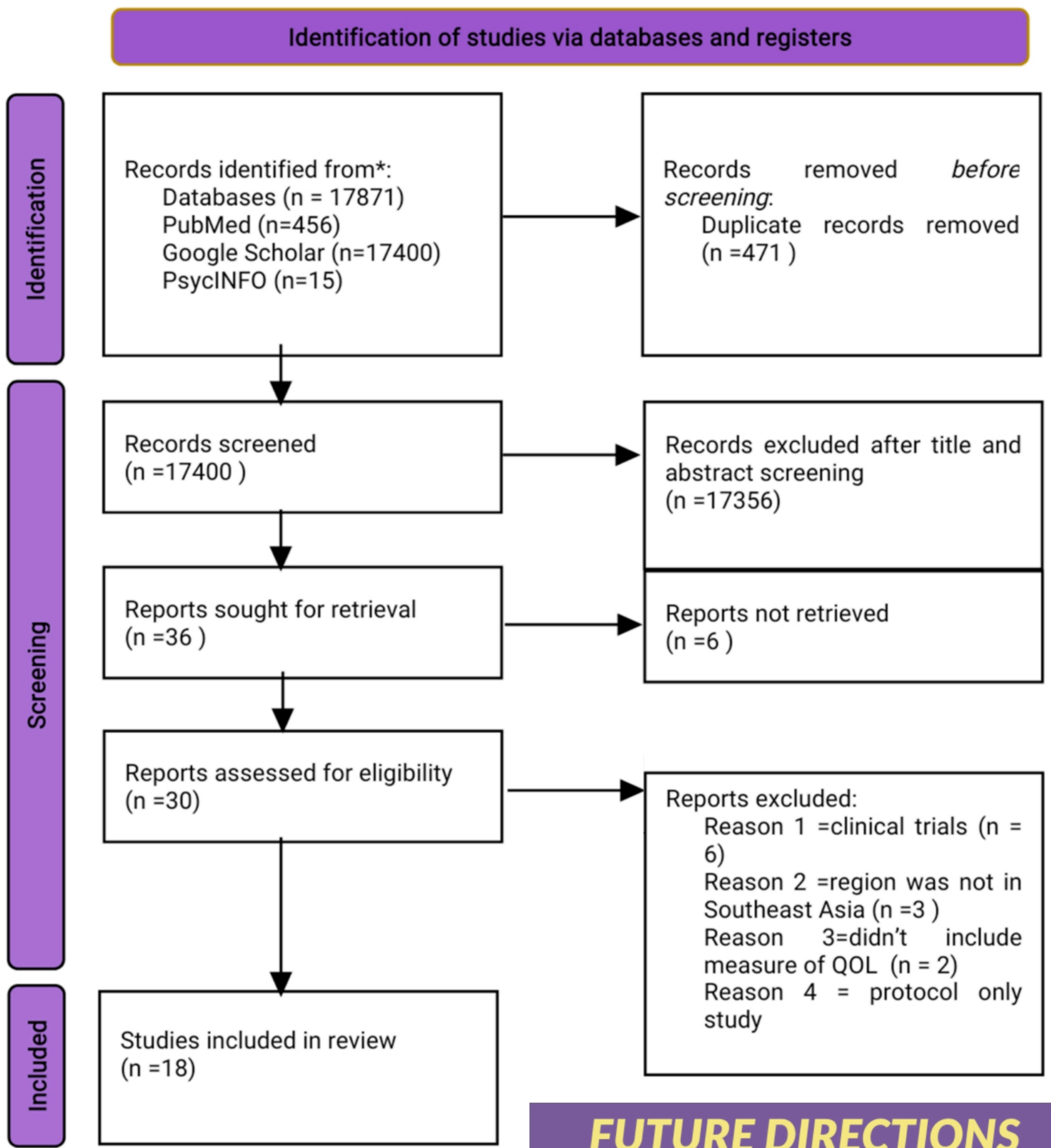
Relation of Satisfaction with QOL:



Comparison:



PRISMA FLOWCHART



FUTURE DIRECTIONS